

{Title}
{Index}

J.P. Pasnak,CD <pasnak@warpedsystems.sk.ca>
20/07/2005

The following document will walk you through the creation of a 1 minute poller applied to a Traffic Interface within Cacti. To create a shorter poller or to apply it to different graphs, substitute the appropriate areas.

1.0 Apply patch to Cacti-0.8.6f

```
# cd /path/to/cacti
# wget http://whereeverpollingintervalpatchis/PollingIntervalsPatch.tar.gz
# tar -xvzf PollingIntervalsPatch.tar.gz
cmd.php
include/config_arrays.php
include/config_settings.php
lib/api_poller.php
lib/utility.php
poller.php
```

2.0 Create new RRA

2.1 Click 'Devices' then 'RRA's

2.2 Click 'Add'

2.3 Fill in info as per below

Round Robin Archives [new]	
Name How data is to be entered in RRA's.	Hourly (1 Minute Average)
Consolidation Functions How data is to be entered in RRA's.	<div>AVERAGE</div> <div>MIN</div> <div>MAX</div> <div>LAST</div>
X-Files Factor The amount of unknown data that can still be regarded as known.	0.5
Steps How many data points are needed to put data into the RRA.	1
Rows How many generations data is kept in the RRA.	500
Timespan How many seconds to display in graph for this RRA.	14400

3.0 Create New Data Template

3.1 Click 'Data Templates' then select 'Interface – Traffic' and **duplicate** it

3.2 Add '1 min' to the template name. Click 'Yes'.

Duplicate

When you click save, the following data templates will be duplicated. You can optionally change the title format for the new data templates.

- Interface - Traffic

Title Format:

<template_title> 1 min

noyes

3.3 Select your new template and:

3.3.1. Select all RRAs

3.3.2. Change 'Step' to '60'

3.3.3. Change Traffic In 'Heartbeat' to '120'

3.3.4. Change Traffic Out 'Heartbeat' to '120'

Data Source

Name
☒ Use Per-Data Source Value (Ignore this Value) | host_description| - Traffic

Data Input Method
This field is always templated. | Get SNMP Data (Indexed) ▼

Associated RRA's
This field is always templated. |
Daily (5 Minute Average)
Hourly (1 Minute Average)
Monthly (2 Hour Average)
Weekly (30 Minute Average)
Yearly (1 Day Average)

Step
☐ Use Per-Data Source Value (Ignore this Value) | 60

Data Source Active
☐ Use Per-Data Source Value (Ignore this Value) | ☒ Data Source Active

1: traffic_in ✖ 2: traffic_out ✖

Data Source Item [traffic_in] New

Internal Data Source Name
☐ Use Per-Data Source Value (Ignore this Value) | traffic_in

Minimum Value
☐ Use Per-Data Source Value (Ignore this Value) | 0

Maximum Value
☐ Use Per-Data Source Value (Ignore this Value) | 100000000

Data Source Type
☐ Use Per-Data Source Value (Ignore this Value) | COUNTER ▼

Heartbeat
☐ Use Per-Data Source Value (Ignore this Value) | 120

4.0 Create New Graph Template

4.1 Click 'Graph Template'

4.2 Select 'Interface – Traffic (bits/sec) and **duplicate**

4.3 Add '1 min' to the template name.

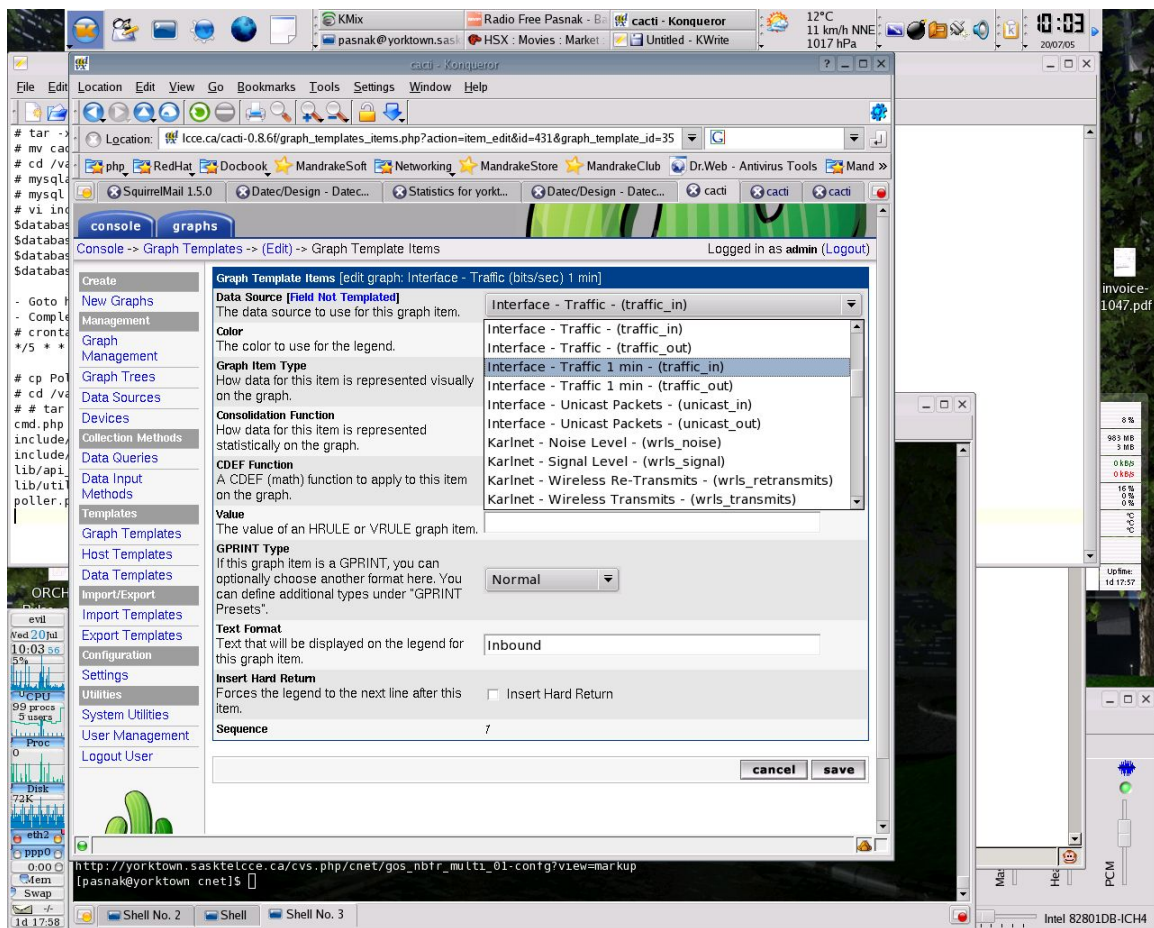
4.4 Select your new Graph Template and:

4.4.1 Adjust each item to point at 'Interface – Traffic 1 min' instead of 'Interface – Traffic'

4.4.2 Verify that 'Graph Item Inputs' are correct {expand with cacti17-20.png}

4.4.3 Save

{crop}



5.0 Adjust Data Query

5.1 Select 'Data Queries' then 'SNMP – Interface Statistics'

5.2 As below {expand}

Save Successful.

Associated Graph/Data Templates [edit: SNMP - Interface Statistics]

Name

A name for this associated graph.

In/Out bits 1 min

Graph Template

Choose what type of host, host template this is. The host template will govern what kinds of data should be gathered from this type of host.

Interface - Traffic (bits/sec) 1 min

Associated Data Templates

Data Template - Interface - Traffic 1 min

Data Source:

traffic_in

ifInOctets (Bytes In)

Data Source:

traffic_out

ifOutOctets (Bytes Out)

6.0Poller adjust

6.1 Adjust poller via 'Settings/Poller'

6.2 Adjust cronjob (change to */1 * * * *)

7.0Create new Graph with 1 minute {expand}

Create

New Graphs

Management

Graph

Data Query [SNMP - Interface Statistics]

Index	Status	Description	Name (IF-MIB)	Alias (IF-MIB)	Type	Speed	Hardware Address	IP Address	
1	1	Ethernet0/0	Eto/0		6	10000000	00:05:32:46:00:81	192.168.188.30	x
2	1	Ethernet0/1	Eto/1		6	10000000	00:05:32:46:00:82	142.165.31.38	x
3	1	Null0	Nu0		1	4294967295			
4	1	Loopback0	Lo0		24	4294967295		192.168.199.78	
5	1	Tunnel0	Tu0	CGI_SKTN_BRWY	131	9000		192.168.0.1	
6	1	Tunnel2	Tu2	CGI_SKTN_EIGH	131	9000		192.168.0.9	
7	1	Tunnel5	Tu5	CGI_SKTN_FAIR	131	9000		192.168.0.21	
8	1	Tunnel9	Tu9	CGI_SKTN_RIVR	131	9000		192.168.0.37	
9	1	Tunnel16	Tu16	CUC_SKTN_MAIN	131	9000		192.168.0.65	
10	1	Tunnel38	Tu38	CGI_SKTN_WSTV	131	9000		192.168.0.153	
11	1	Tunnel79	Tu79	SDH_SKTN (for 8600s)	131	9000		192.168.10.61	
12	1	Tunnel40	Tu40	CGI_SKTN_WRMN	131	9000		192.168.0.197	

Select a graph type: In/Out bits 1 min

8.0 Add new graph to tree

